

Emergency Services Education Center

700 North High School Road
Indianapolis, Indiana 46214

317-988-7703

<https://esec.wayne.k12.in.us/>

Visitor Welcome Packet



Director's Welcome



Brandon Wood
Program Director

Brandon.wood@wayne.k12.in.us

On behalf of the Emergency Services Education Center, I would like to welcome you to our facility! We house a state of the art training facility, which you will read about in the "Program Overview."

We pride ourselves on professionalism, and dedication to not only our students, but anyone who visits our training grounds.

While you are here, I invite you to enjoy the grounds and never be afraid to ask questions.

Thank you for your interest in our fully functional, high intensity training facility. I look forward to seeing you back soon.

Very Respectfully,

A handwritten signature in blue ink that reads "B. Wood".

Brandon L. Wood
Program Director

Program Overview



ESEC is a 63 acre complex located on the westside of Indianapolis, easily accessible to the Indianapolis International Airport and the interstate system(s) of I465 and I70. The facility is designed to meet the training needs of public safety personnel, commercial safety personnel, and community stakeholders. We provide relevant, realistic training at relatable prices that are attractive to departments of all sizes and types.

ESEC instructors are among the best in Indiana. The ESEC instructors are all firefighter/instructors with their specific department, as well as certified to the NFPA 1041: ***Standard for Fire and Emergency Services Instructor***. Under specific conditions, we offer the facilitation and operation of unique facilities by highly motivated, passionate and skilled instructors.

Firefighters from around the world have traveled to the ESEC to participate in classes tailored to suit their particular training needs. Our electronic controlled live-fire training building and props integrate multiple safety features, while maintaining the realistic training that today's emergency responders require. The building is equipped with four separate burners to simulate warehouse, living room, bedroom and restaurant kitchen fires. The ESEC also houses a full scale car fire simulator, with gas controlled systems for safe and efficient operations. The system monitors heat and water application to provide realistic firefighting scenarios and can initiate a fire every two minutes. Students will respond, layout, advance, extinguish and be ready to repeat the response cycle in a minimum amount of time, giving you a worthwhile return on your investment.

Other aspects that the ESEC offer are a fully functional conference center, fully operational technical rescue training area, Emergency Medical Technician courses, Candidate Physical Ability Testing (CPAT), and hazardous materials training pad. With these aspects integrated with the passion and desire to become trained emergency service personnel, the ESEC is proud to welcome you!

Campus Contacts



Program Manager

Beverly Jinkins

317-988-7703

Beverly.jinkins@wayne.k12.in.us

Program Director

Brandon Wood

812-371-6045

Brandon.wood@wayne.k12.in.us

Deputy Program Director / CPAT Facility Coordinator

Chris George

317-775-1703

Firefighter885george@gmail.com

Safety/ Security (Non-Emergency; Monday-Friday)

Chief Brian Clouse

317-988-6375

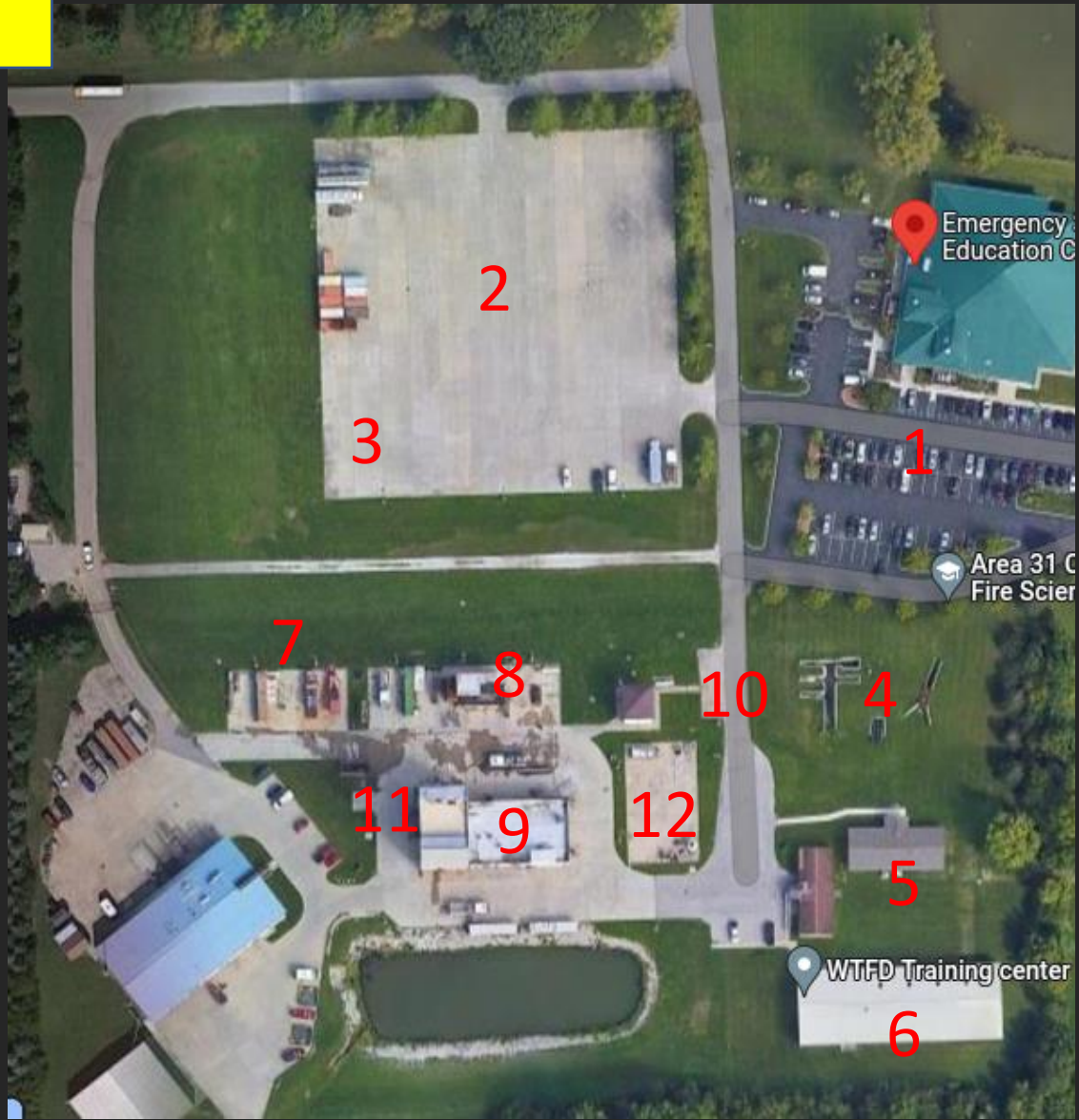


Emergency Departments Near the ESEC

1. Eskenazi Health
720 Eskenazi Ave, Indianapolis, IN 46202
Distance (from ESEC)- 5.5 Miles
2. IU Health Methodist
1701 N. Senate Blvd., Indianapolis, IN 46202
Distance (from ESEC) - 6.9 Miles
3. Riley Children's Hospital
705 Riley Hospital Drive, Indianapolis, IN 46202
Distance (from ESEC)- 5.5 Miles
4. IU Health West Hospital
1111 Ronald Reagan Pkwy, Avon, IN 46123
Distance (from ESEC)- 4.2 Miles (via 10th Street)
5. Hendricks Regional Health
1000 E. Main St., Danville, IN 46122
Distance (from ESEC)- 13.2 Miles

**For emergencies on
campus, please dial
9-1-1**

 Denotes Noth



	Training / Administrative Area(s)
1	Grand Hall / Parking Lot
2	Vincennes Driving Pad
3	Extrication Pad Area / Connex Storage
4	Technical Rescue Area (Confined Space Simulator, Rope Rescue Prop, Diminished Zone Simulator)
5	Class Rooms (2)
6	CPAT Building / Logistics
7	Flashover Chambers
8	Class A Burn Building
9	6 Story Training Tower
10	Control Tower / SCBA Filling Station / Restrooms
11	ESEC Fire Engine Bay
12	Hazardous Materials Training Pad

**We are just minutes
away from two
major interstate
highways.**

**I-465, I-70, and
I-74 are a matter of
minutes from our
training facility.**





As this is a working training facility, there are many occasions in which you may encounter emergency vehicles, semi vehicles with trailers, students, instructors and other visitors.

Please use caution when approaching, and walking around any ESEC location on our property.

Please feel free to contact the Program Manager and/or Program Director for further instructions for your safety.

We wish you the safest experience possible.